

Figure S9

Genome-wide composition of blastocysts following multipolar zygotic division. Circos plots of six embryos that developed to the blastocyst-stage following multipolar zygotic division in which each circle represents the interpreted genome constitution per chromosome (1 - X) of a sampled single cell. The interpreted genome spanning the largest part of the chromosome was chosen as overall interpretation per chromosome, as such, segmental chromosomal errors are not depicted. On the left of each circus plot, a picture is shown of each embryo before dissociation (not available for E26_Cross13).

Figure S9

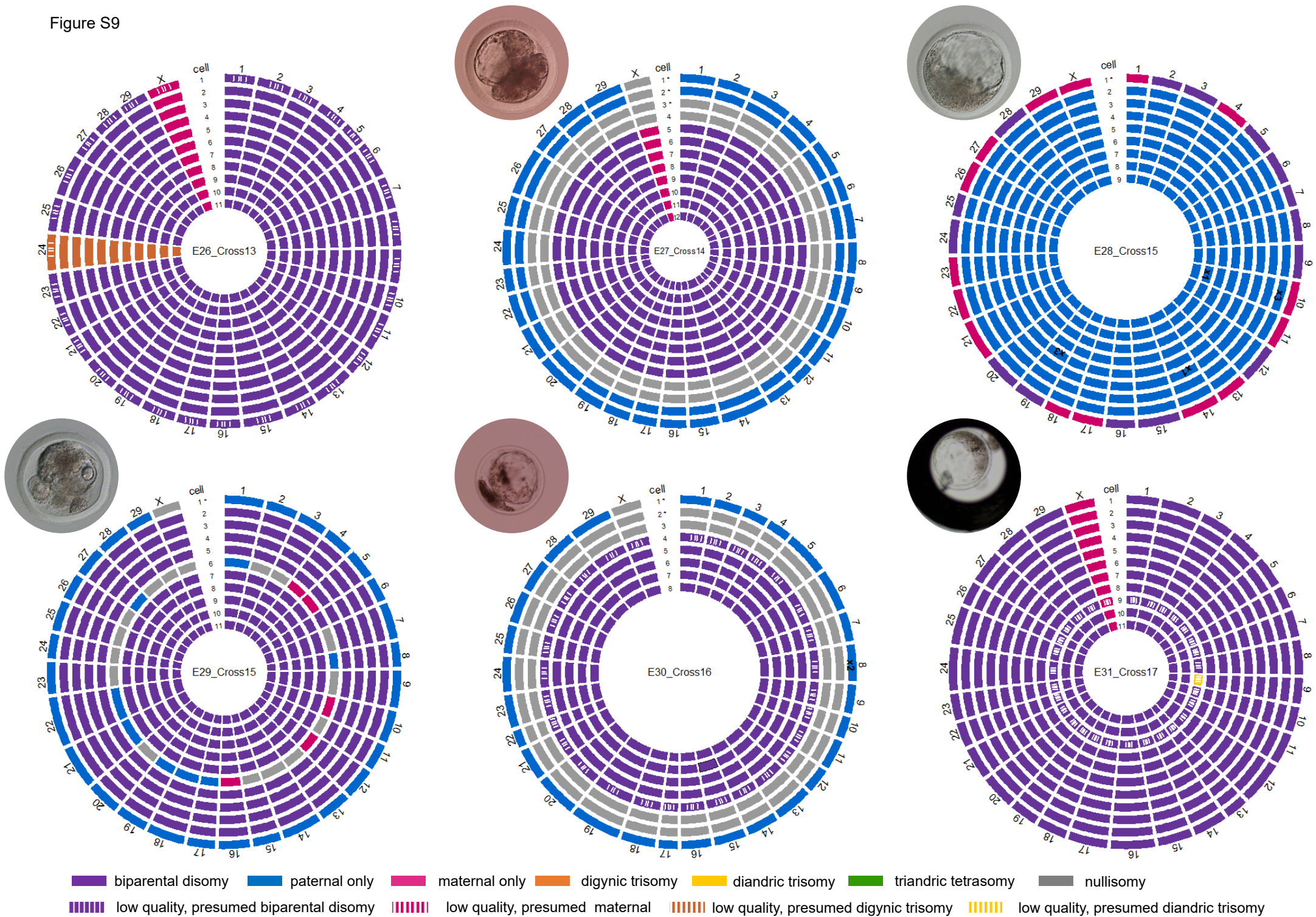
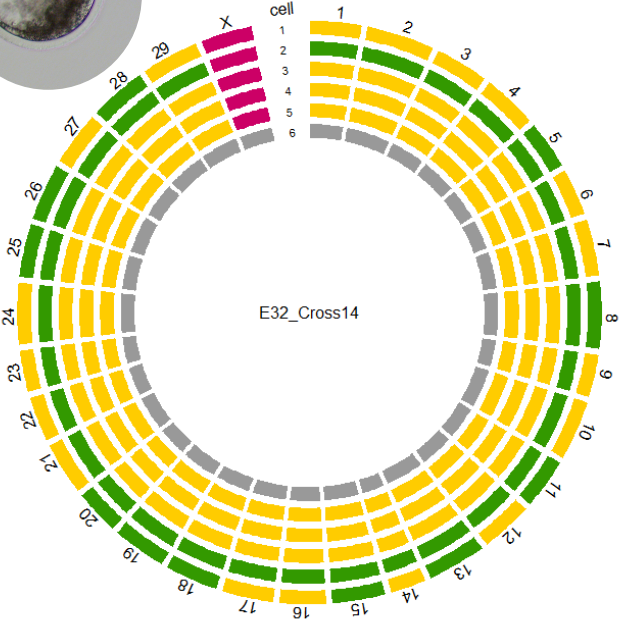
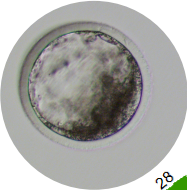


Figure S9 (continued)



■ biparental disomy ■ paternal only ■ maternal only ■ digynic trisomy ■ diandric trisomy ■ triandric tetrasomy ■ nullisomy
■■■■ low quality, presumed biparental disomy ■■■■ low quality, presumed maternal ■■■■ low quality, presumed digynic trisomy ■■■■ low quality, presumed diandric trisomy

* blastomere extruded to perivitelline space **x1** uniparental chromosomal loss **x2/x3** uniparental chromosomal gain