

Additional File 5

5 cardiac POCUS views knowledge test (40-point maximum)

This knowledge test includes 40 multiple-choice questions; (Part 1: 9 questions, Part 2: 10 questions, Part 3: 9 questions, Part 4: 7 questions, Part 5: 5 questions). Please choose correct answer from the answer choices below.

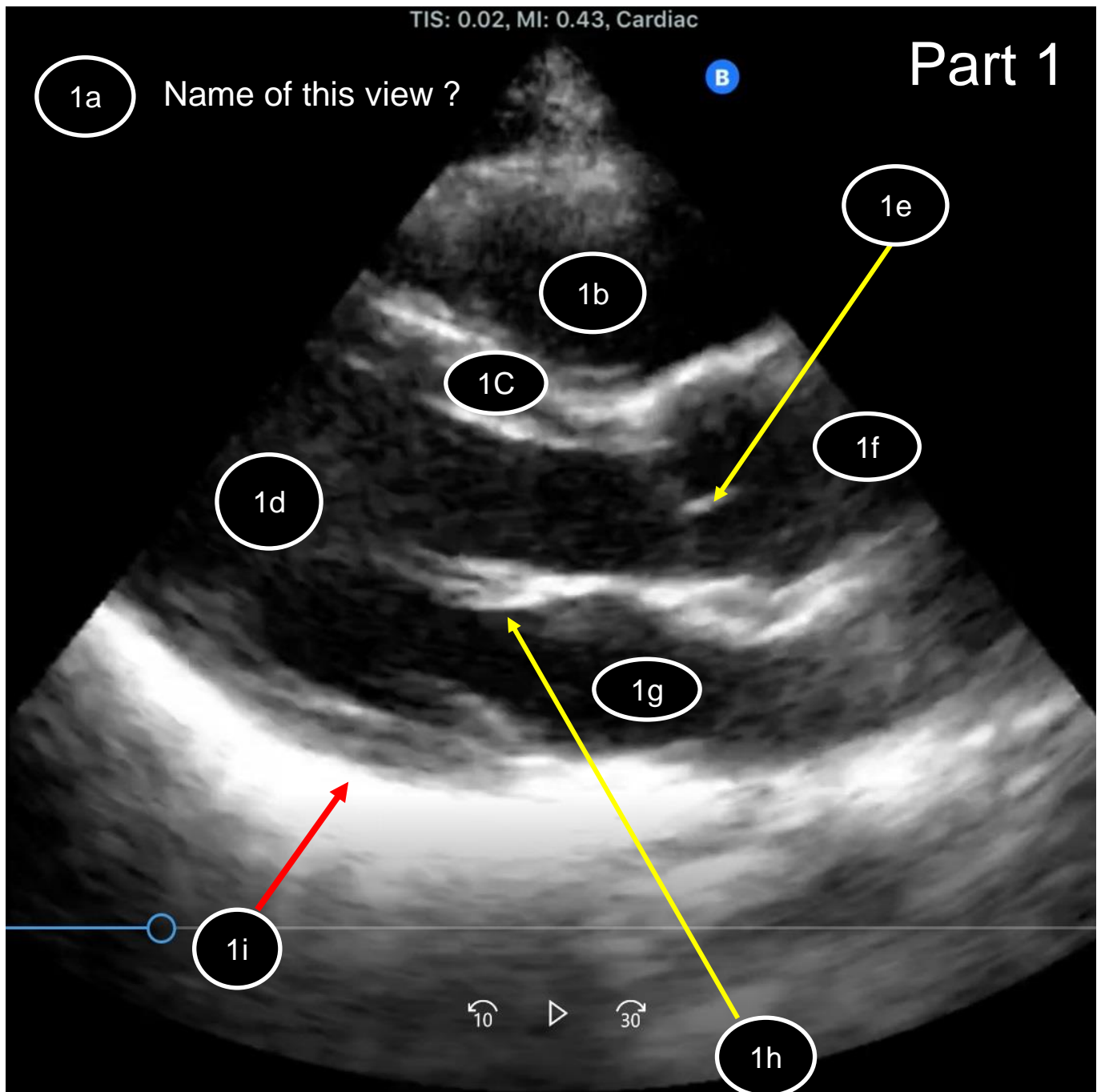
Please complete the test within 30 minutes.

Please do not review any resources such as textbooks or websites prior to or during your knowledge assessment.

Answer choices

- | | |
|-----------------------------|---|
| 1. Right Atrium | 21. Inferior wall of LV |
| 2. Right Atrial Appendage | 22. Lateral wall of LV (Antero-lateral) |
| 3. Right Ventricle | 23. Antero-lateral Papillary Muscle |
| 4. Left Atrium | 24. Postero-medial Papillary Muscle |
| 5. Left Atrial Appendage | 25. Diaphragm |
| 6. Left Ventricle | 26. Pericardium |
| 7. Aortic Valve | 27. Liver |
| 8. Mitral Valve | 28. Lung |
| 9. Tricuspid Valve | 29. Kidney |
| 10. Pulmonary Valve | 30. Spleen |
| 11. Ascending Aorta | 31. Parasternal long-axis view |
| 12. Descending Aorta | 32. Parasternal short-axis view |
| 13. Aortic Arch | 33. Apical 4-chamber view |
| 14. Pulmonary Artery | 34. Apical 2-chamber view |
| 15. Pulmonary Vein | 35. Apical 3-chamber view |
| 16. Superior Vena Cava | 36. Apical 5-chamber view |
| 17. IVC | 37. Suprasternal view |
| 18. Interatrial Septum | 38. Subcostal 4-chamber view |
| 19. Interventricular Septum | 39. Subcostal IVC view |
| 20. Anterior wall of LV | 40. I have no idea. |

IVC = Inferior Vena Cava, LV = Left Ventricle



Question 1-1. What is the name of view **1a** ?

Question 1-2. What is **1b** ?

Question 1-3. What is **1c** ?

Question 1-4. What is **1d** ?

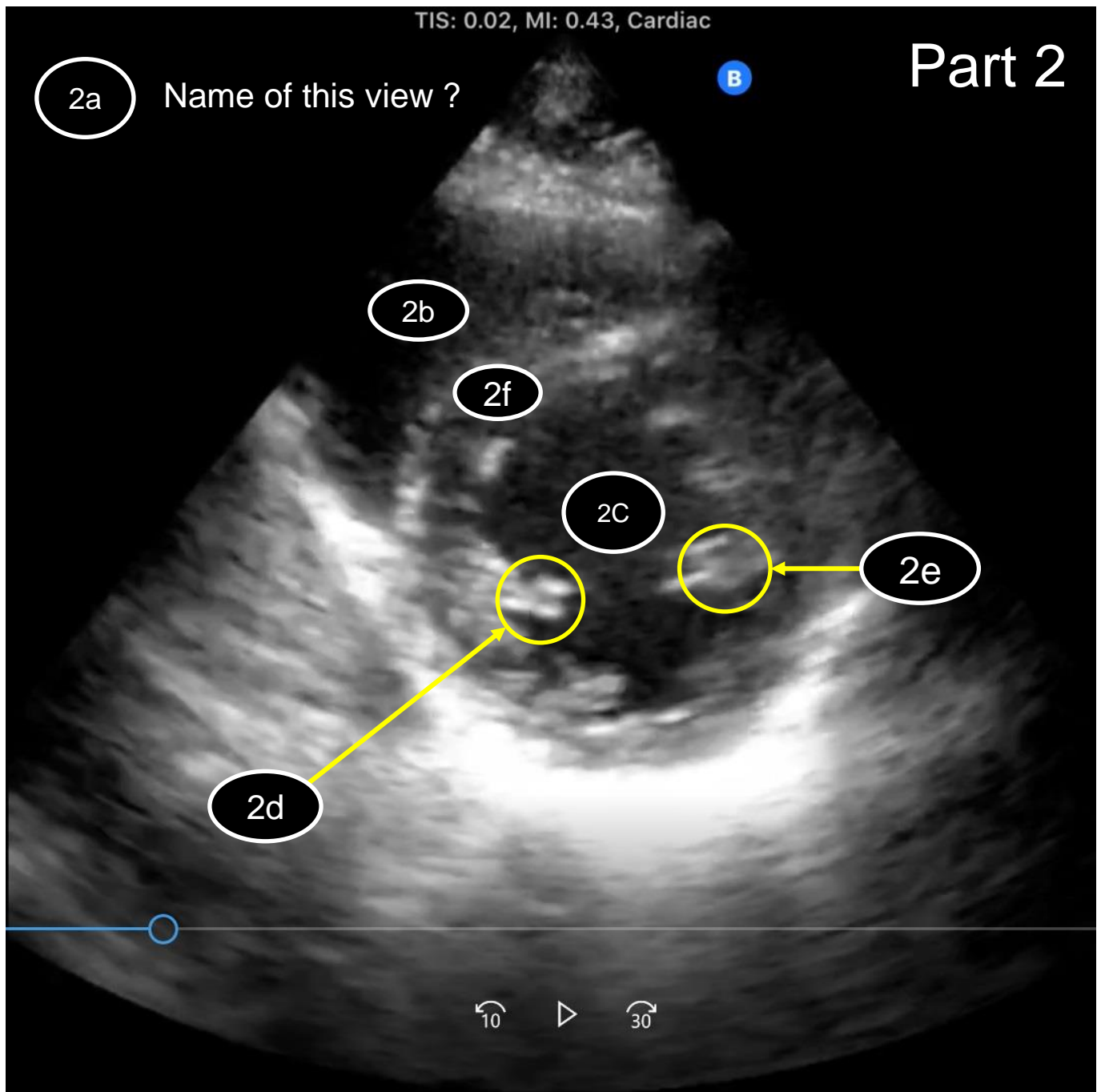
Question 1-5. What is **1e** ?

Question 1-6. What is **1f** ?

Question 1-7. What is **1g** ?

Question 1-8. What is **1h** ?

Question 1-9. What is the brighter region **1i** ?



Question 2-1. What is the name of view **2a** ?

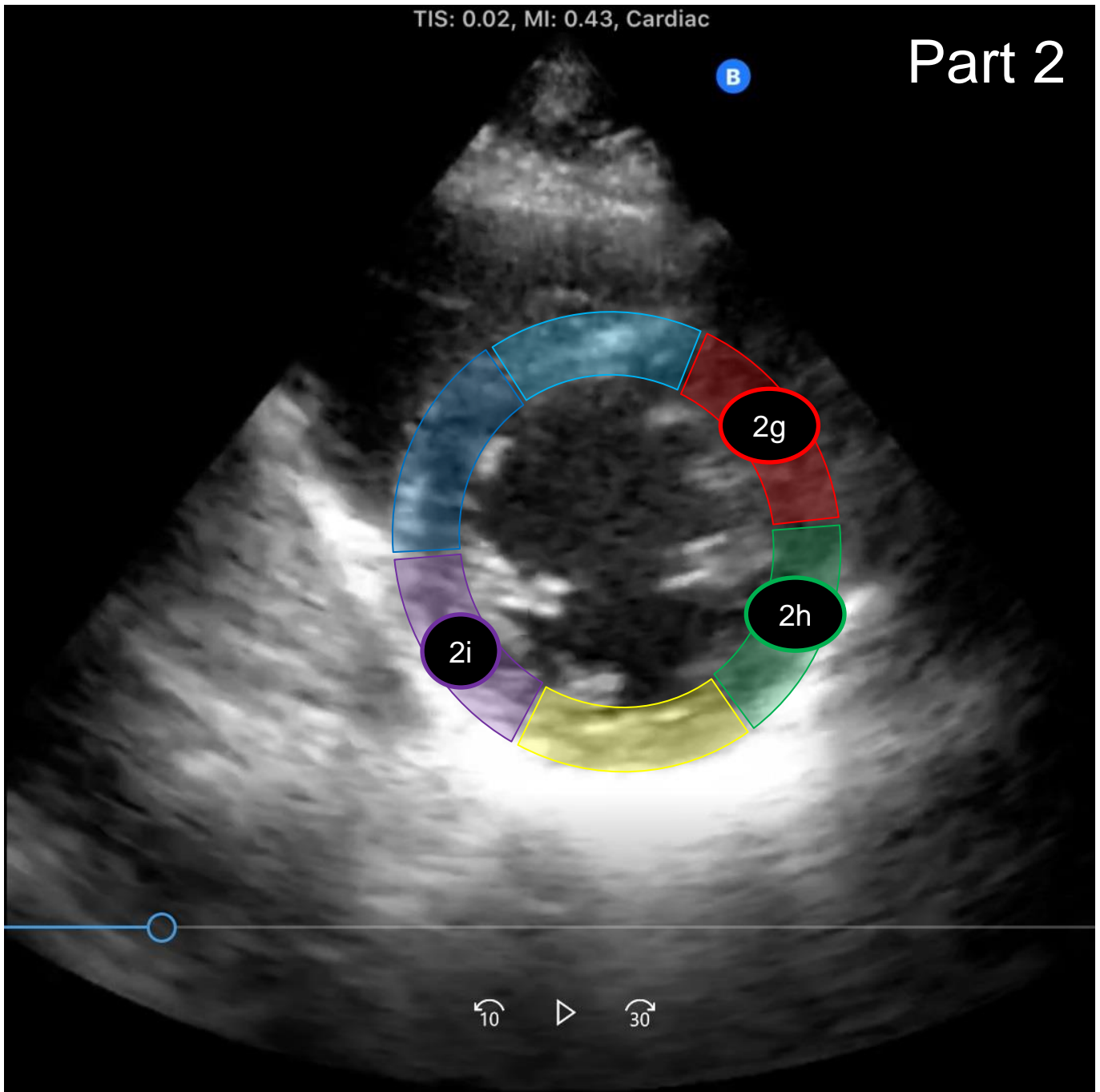
Question 2-2. What is **2b** ?

Question 2-3. What is **2c** ?

Question 2-4. What is **2d** ?

Question 2-5. What is **2e** ?

Question 2-6. What is **2f** ?



Question 2-7. What segment of left ventricle wall is **2g** ?

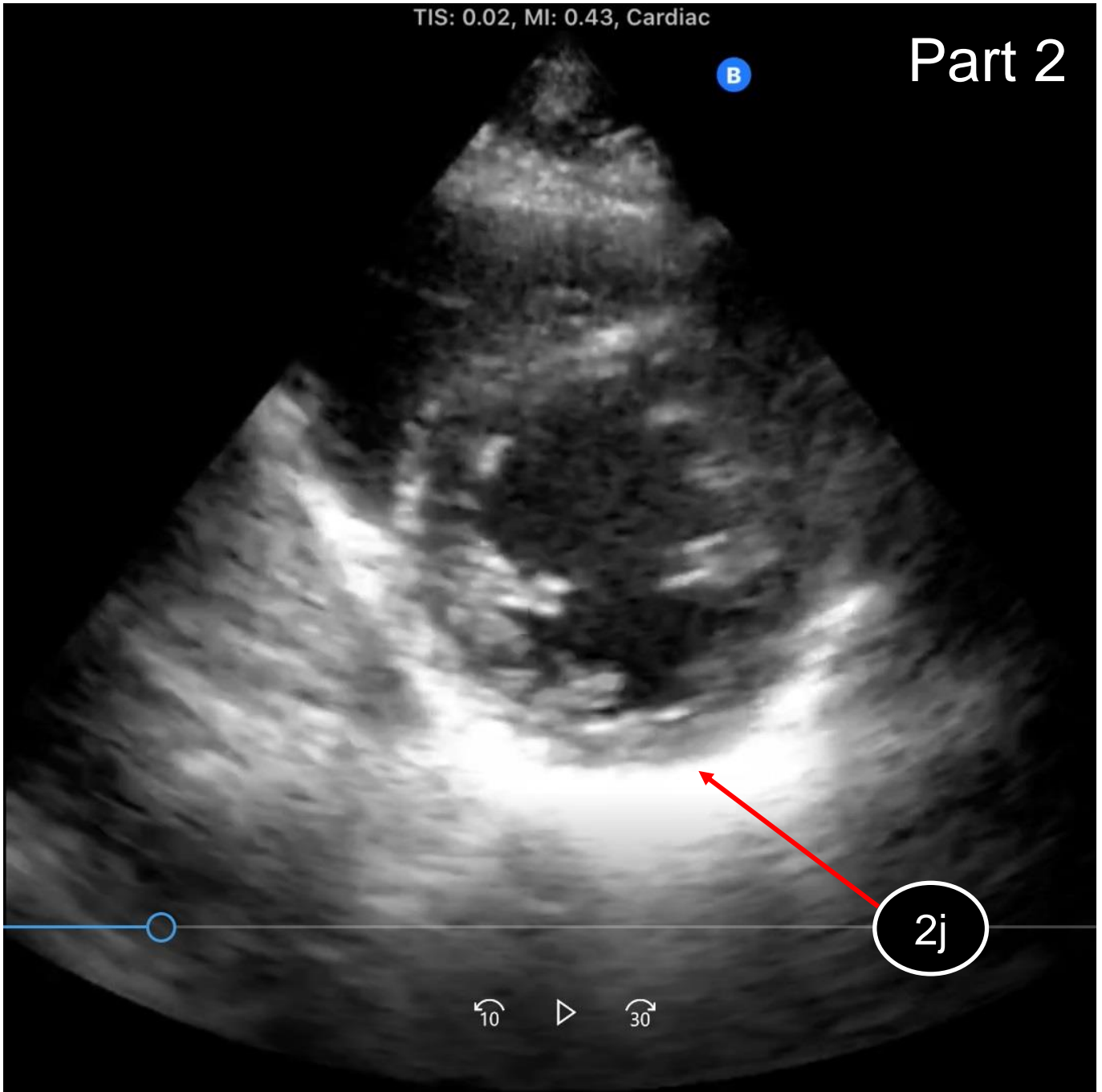
Question 2-8. What segment of left ventricle wall is **2h** ?

Question 2-9. What segment of left ventricle wall is **2i** ?

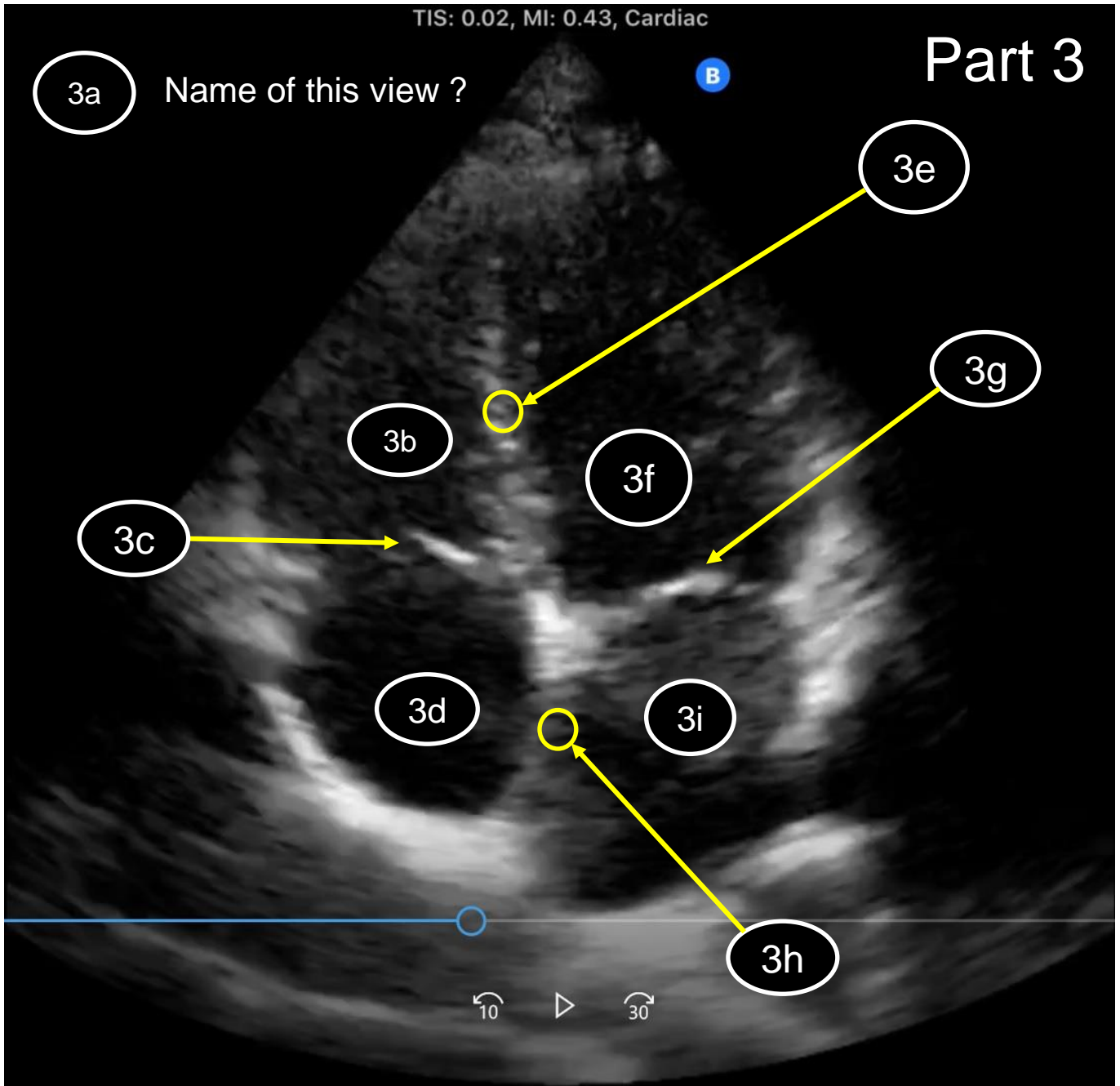
TIS: 0.02, MI: 0.43, Cardiac

B

Part 2



Question 2-10. What is the brighter region **2j** ?



Question 3-1. What is the name of view **3a** ?

Question 3-2. What is **3b** ?

Question 3-3. What is **3c** ?

Question 3-4. What is **3d** ?

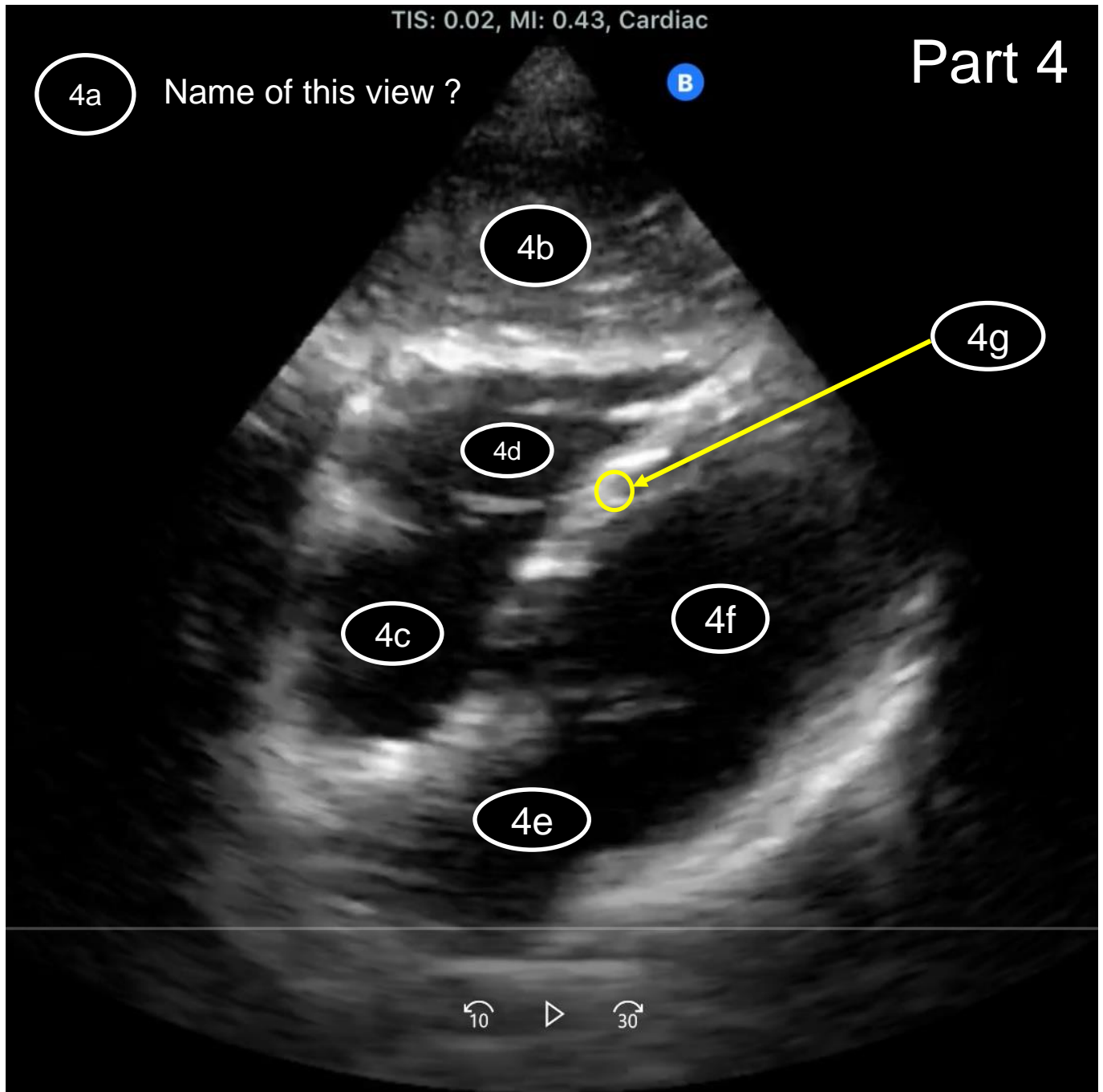
Question 3-5. What is **3e** ?

Question 3-6. What is **3f** ?

Question 3-7. What is **3g** ?

Question 3-8. What is **3h** ?

Question 3-9. What is **3i** ?



Question 4-1. What is the name of view **4a** ?

Question 4-2. What is **4b** ?

Question 4-3. What is **4c** ?

Question 4-4. What is **4d** ?

Question 4-5. What is **4e** ?

Question 4-6. What is **4f** ?

Question 4-7. What is **4g** ?

5a

Name of this view ?

B

5b

5c

5d

5e

10



30

Question 5-1. What is the name of view **5a** ?

Question 5-2. What is **5b** ?

Question 5-3. What is **5c** ?

Question 5-4. What is **5d** ?

Question 5-5. What is **5e** ?

Correct Answers: Part 1 and 2.

Question	Answer
Part 1	
Question 1-1. 1a	31 (Parasternal long-axis view)
Question 1-2. 1b	3 (Right Ventricle)
Question 1-3. 1c	19 (Interventricular Septum)
Question 1-4. 1d	6 (Left Ventricle)
Question 1-5. 1e	7 (Aortic Valve)
Question 1-6. 1f	11 (Ascending Aorta)
Question 1-7. 1g	4 (Left Atrium)
Question 1-8. 1h	8 (Mitral Valve)
Question 1-9. 1i	26 (Pericardium)
Part 2	
Question 2-1. 2a	32 (Parasternal short-axis view)
Question 2-2. 2b	3 (Right Ventricle)
Question 2-3. 2c	6 (Left Ventricle)
Question 2-4. 2d	24 (Postero-medial Papillary Muscle)
Question 2-5. 2e	23 (Antero-lateral Papillary Muscle)
Question 2-6. 2f	19 (Interventricular Septum)
Question 2-7. 2g	20 (Anterior wall of LV)
Question 2-8. 2h	22 (Lateral wall of LV (Antero-lateral))
Question 2-9. 2i	21 (Inferior wall of LV)
Question 2-10. 2j	26 (Pericardium)

LV = Left Ventricle

Correct Answers: Part 3,4, and 5

Question	Answer
Part 3	
Question 3-1. 3a	33 (Apical 4-chamber view)
Question 3-2. 3b	3 (Right Ventricle)
Question 3-3. 3c	9 (Tricuspid Valve)
Question 3-4. 3d	1 (Right Atrium)
Question 3-5. 3e	19 (Interventricular Septum)
Question 3-6. 3f	6 (Left Ventricle)
Question 3-7. 3g	8 (Mitral Valve)
Question 3-8. 3h	18 (Interatrial Septum)
Question 3-9. 3i	4 (Left Atrium)
Part 4	
Question 4-1. 4a	38 (Subcostal 4-chamber view)
Question 4-2. 4b	27 (Liver)
Question 4-3. 4c	1 (Right Atrium)
Question 4-4. 4d	3 (Right Ventricle)
Question 4-5. 4e	4 (Left Atrium)
Question 4-6. 4f	6 (Left Ventricle)
Question 4-7. 4g	19 (Interventricular Septum)
Part 5	
Question 5-1. 5a	39 (Subcostal IVC view)
Question 5-2. 5b	27 (Liver)
Question 5-3. 5c	25 (Diaphragm)
Question 5-4. 5d	17 (IVC)
Question 5-5. 5e	1 (Right Atrium)

IVC = Inferior Vena Cava.