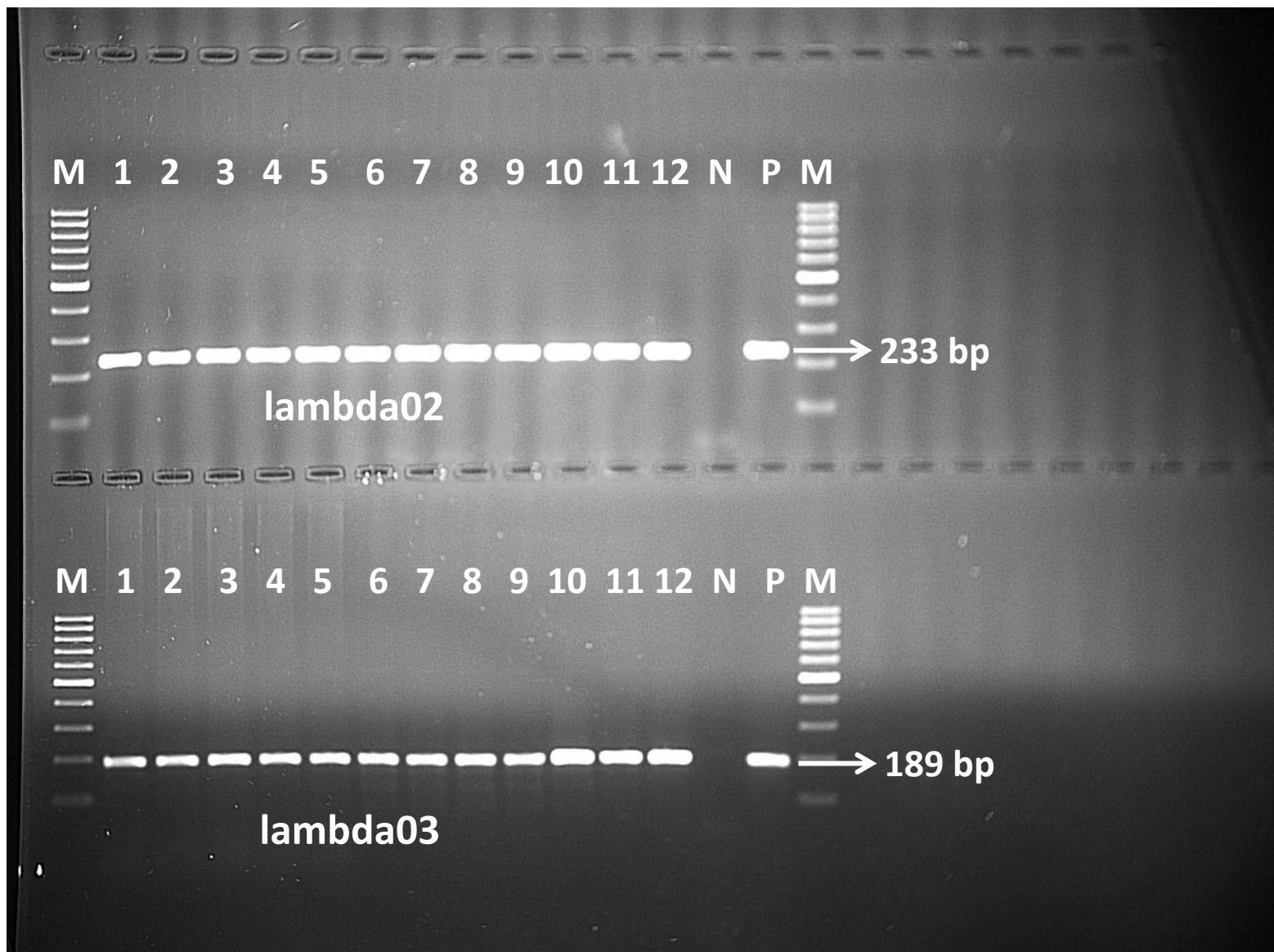


lambda01

221 bp

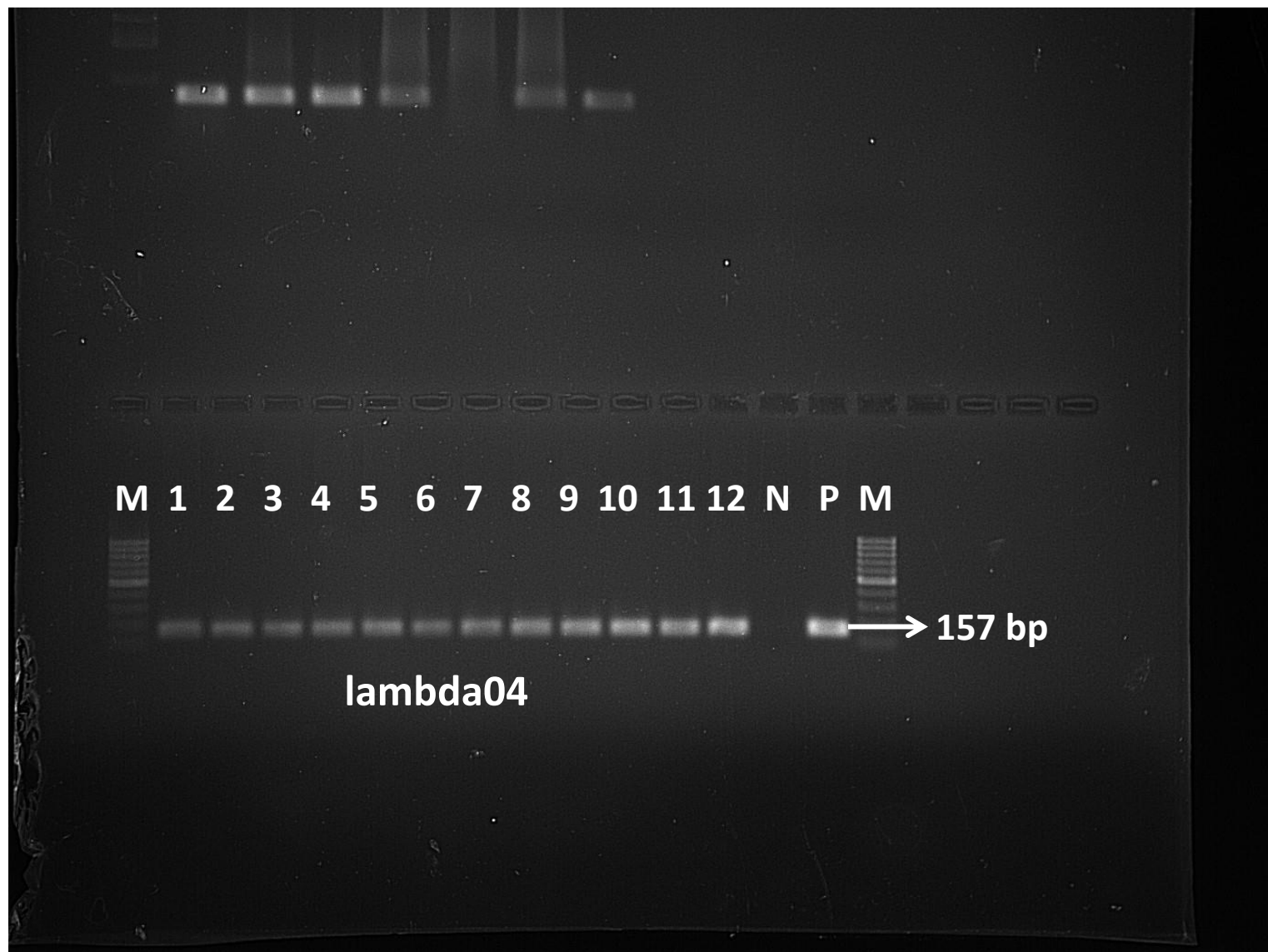
Additional File 3A. PCR for the screening of *Bacillus anthracis* specific prophages in the 12 *B. anthracis* DFRL.BHE strains 1-12.
(a) lambda01

Lane 1-12, *B. anthracis* DFRL.BHE strains 1-12 along with positive (Lane P: *B. anthracis* BA10) and negative (Lane N: *B. cereus* ATCC 14579) controls. Lane M : 100 bp molecular marker.



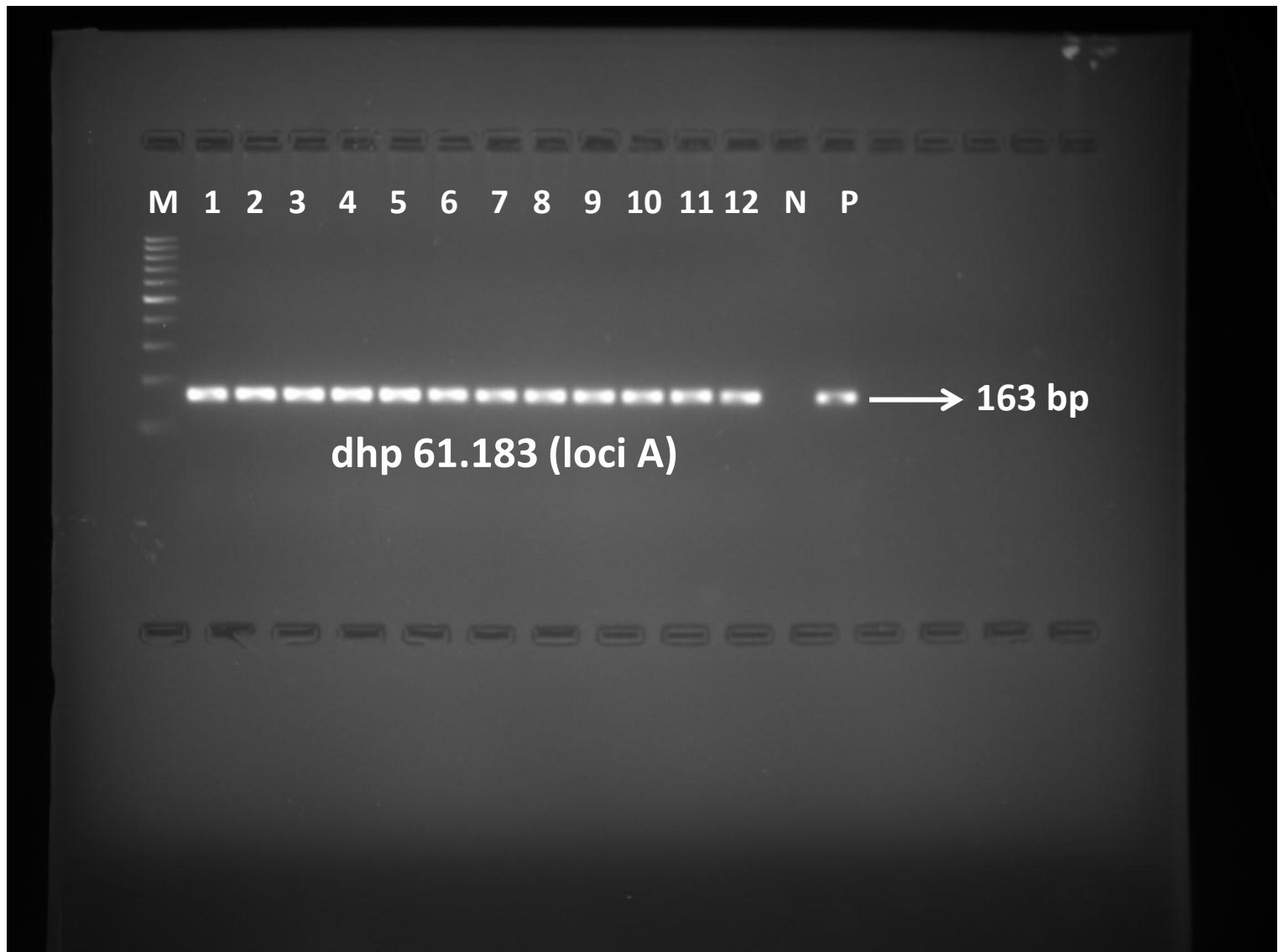
Additional File 3A. PCR for the screening of *Bacillus anthracis* specific prophages in the 12 *B. anthracis* DFR.BHE strains 1-12.
(b) lambda02 (c) lambda03

Lane 1-12, *B. anthracis* DFR.BHE strains 1-12 along with positive (Lane P: *B. anthracis* BA10) and negative (Lane N: *B. cereus* ATCC 14579) controls. Lane M : 100 bp molecular marker.



Additional File 3A. PCR for the screening of *Bacillus anthracis* specific prophages in the 12 *B. anthracis* DFR.BHE strains 1-12. (d) lambda04

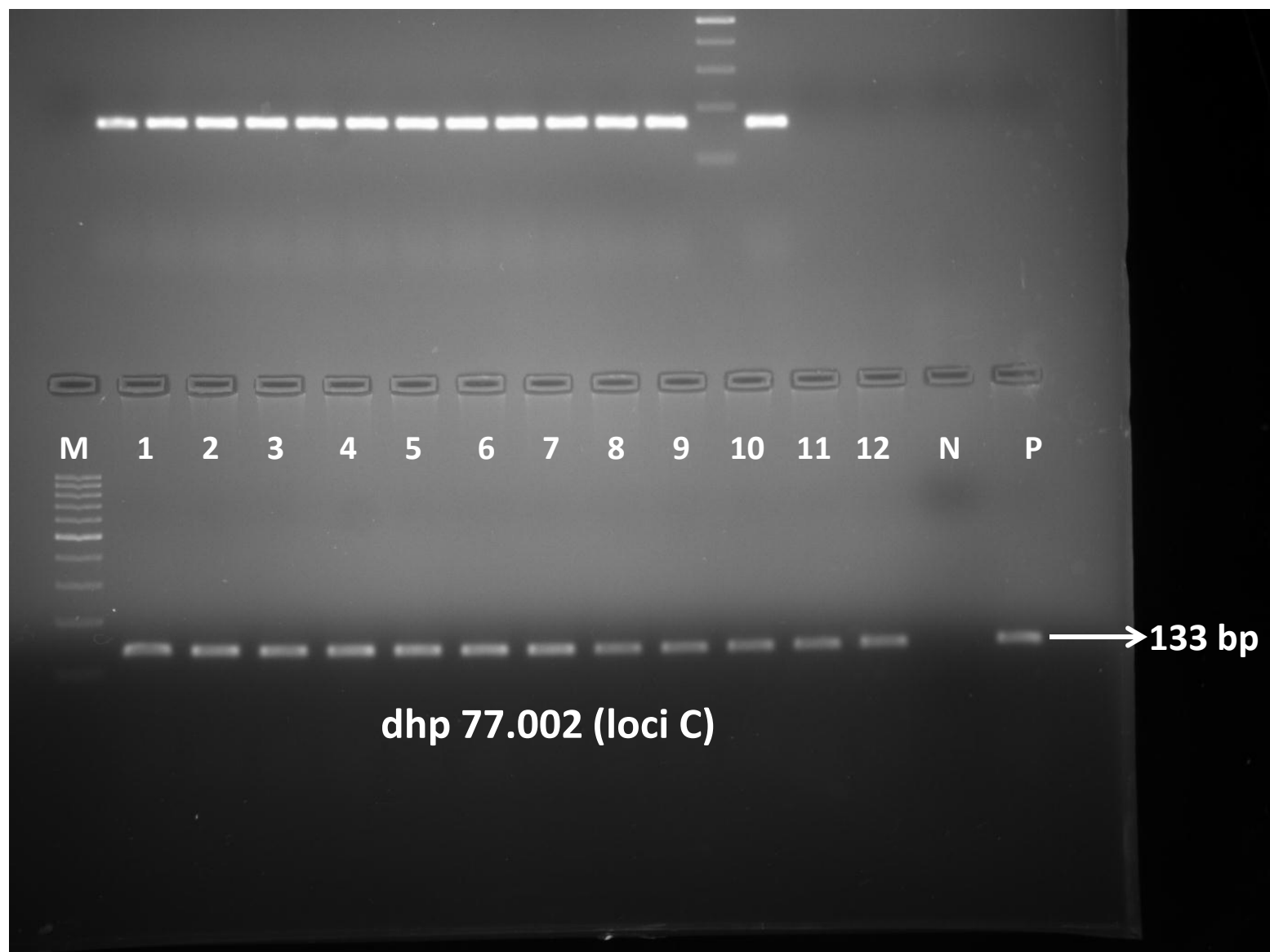
Lane 1-12, *B. anthracis* DFR.BHE strains 1-12 along with positive (Lane P: *B. anthracis* BA10) and negative (Lane N: *B. cereus* ATCC 14579) controls. Lane M : 100 bp molecular marker.



Additional File 3B. PCR for the screening of *Bacillus anthracis* specific loci in the 12 *B. anthracis* DFR.BHE strains 1-12.

(a) dhp 61.183 (loci A)

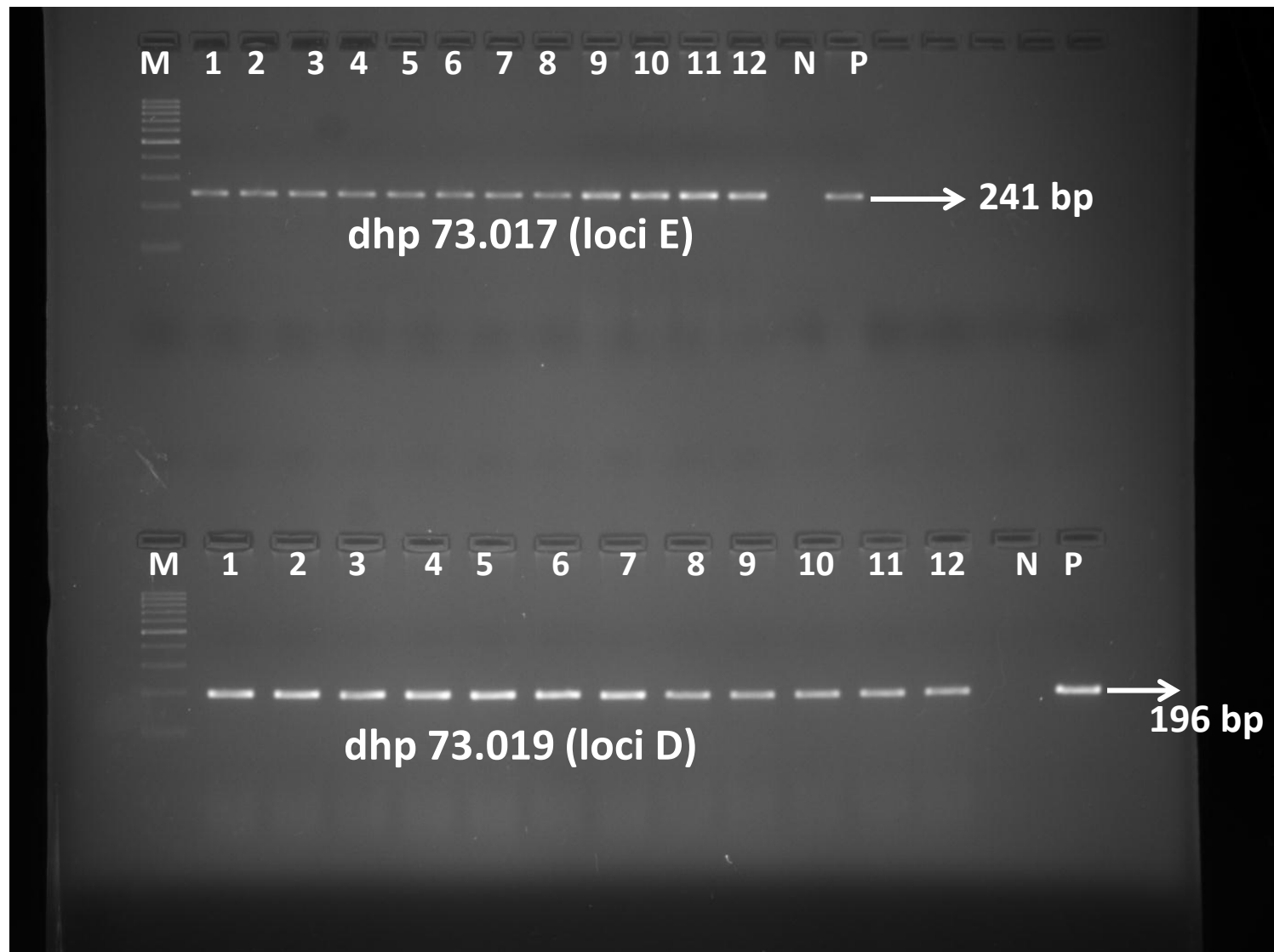
Lane 1-12, *B. anthracis* DFRL.BHE strains 1-12 along with positive (Lane P: *B. anthracis* BA10) and negative (Lane N: *B. cereus* ATCC 14579) controls. Lane M : 100 bp molecular marker.



Additional File 3B. PCR for the screening of *Bacillus anthracis* specific loci in the 12 *B. anthracis* DFR.BHE strains 1-12.

(b) dhps 77.002 (loci C)

Lane 1-12, *B. anthracis* DFR.BHE strains 1-12 along with positive (Lane P: *B. anthracis* BA10) and negative (Lane N: *B. cereus* ATCC 14579) controls. Lane M : 100 bp molecular marker.



Additional File 3B . PCR for the screening of *Bacillus anthracis* specific loci in the 12 *B. anthracis* DFR.BHE strains 1-12.

(d) dhps 73.017 (loci E), (c) dhps 73.019 (loci D),

Lane 1-12, *B. anthracis* DFR.BHE strains 1-12 along with positive (Lane P: *B. anthracis* BA10) and negative (Lane N: *B. cereus* ATCC 14579) controls. Lane M : 100 bp molecular marker.