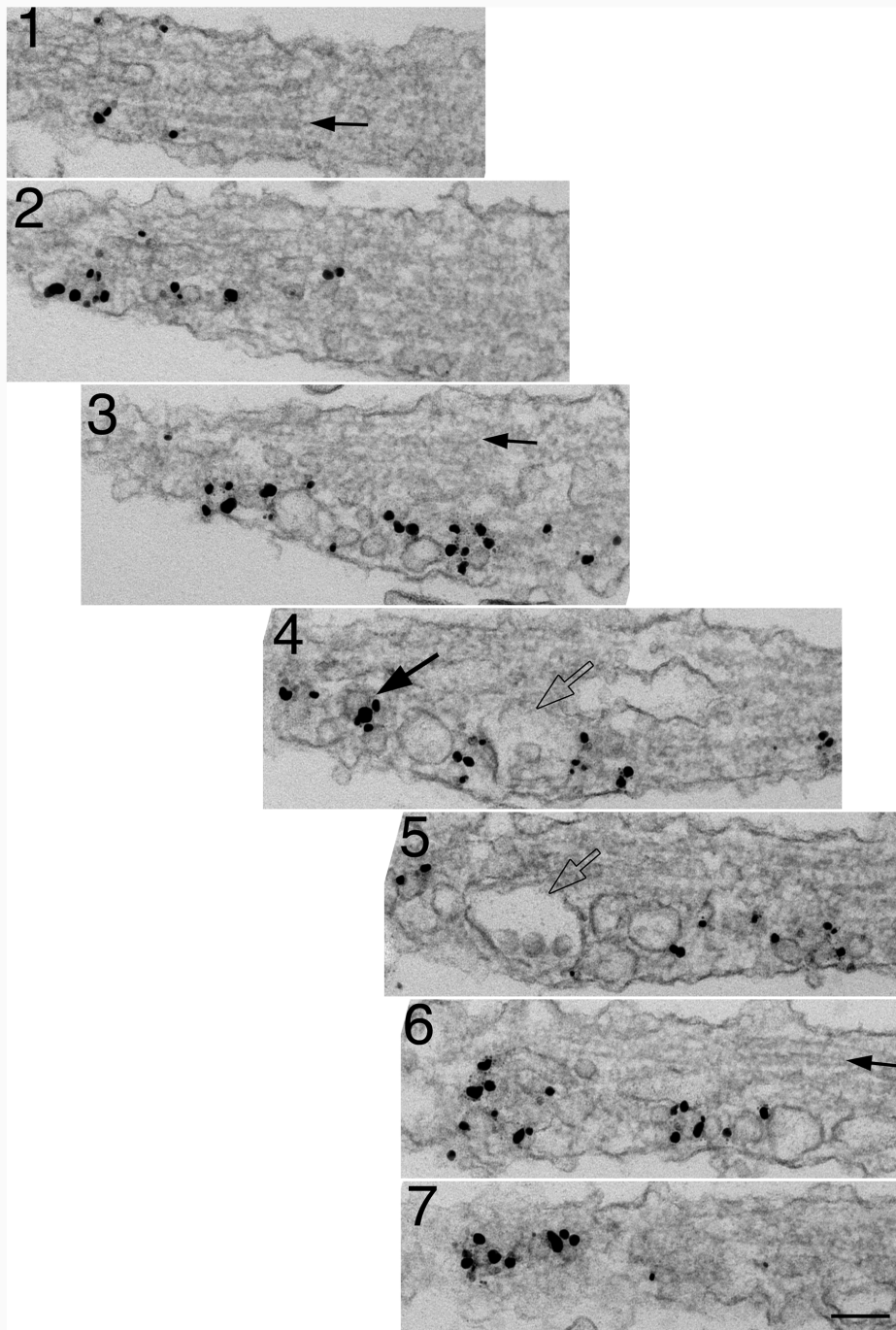


Additional File 4. Serial sections through a young axon at 5 days in culture labeled with SV2 antibody.



Label for SV2 is specifically localized on membranous structures of various sizes. A large arrow in section #4 points to a labeled coated vesicle. Open arrows in #4 & 5 point to a multivesicular body. Sample was fixed with acrolein initially to preserve microtubules (small arrows in sections #1, 3, 6). Scale bar = 100 nm.