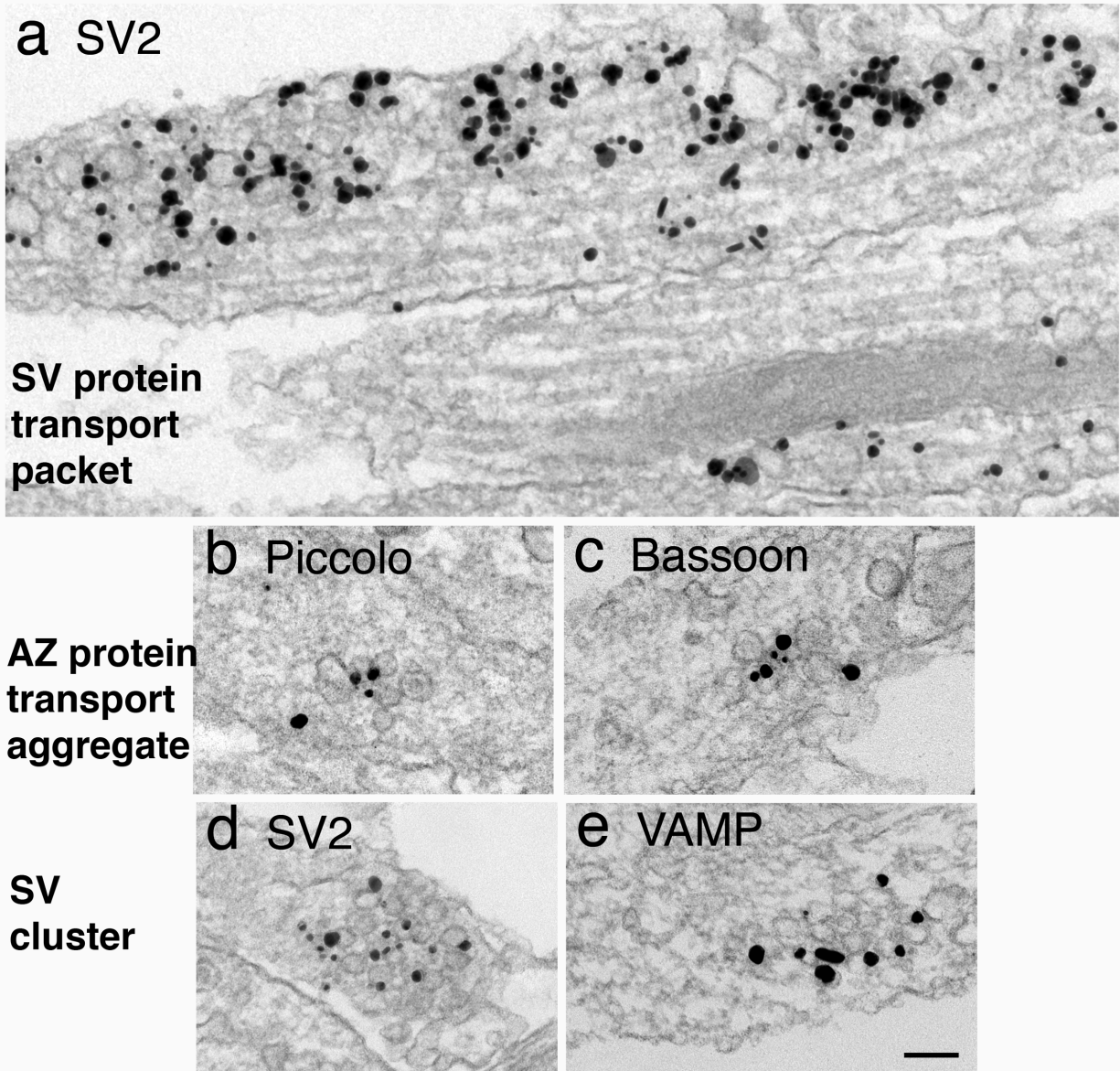


**Additional File 3. Comparison among SV membrane protein transport aggregate, AZ protein transport aggregate, and clusters of SV-like vesicles.**



SV protein transport packets are variable in size, with some greater than  $2\ \mu\text{m}$  in length (SV2-labeled aggregate on top in a) and others smaller with fewer vesicles (labeled aggregate on bottom in a). On the other hand, AZ transport aggregates are much smaller at  $\sim 0.2\ \mu\text{m}$  (b & c). Finally, d & e show clusters of uniform-sized SVs labeled for SV membrane proteins. Samples are from dissociated hippocampal cultures at 3 (c, d), 4 (a, e), 5 (b) days in vitro. Scale bar = 100 nm.