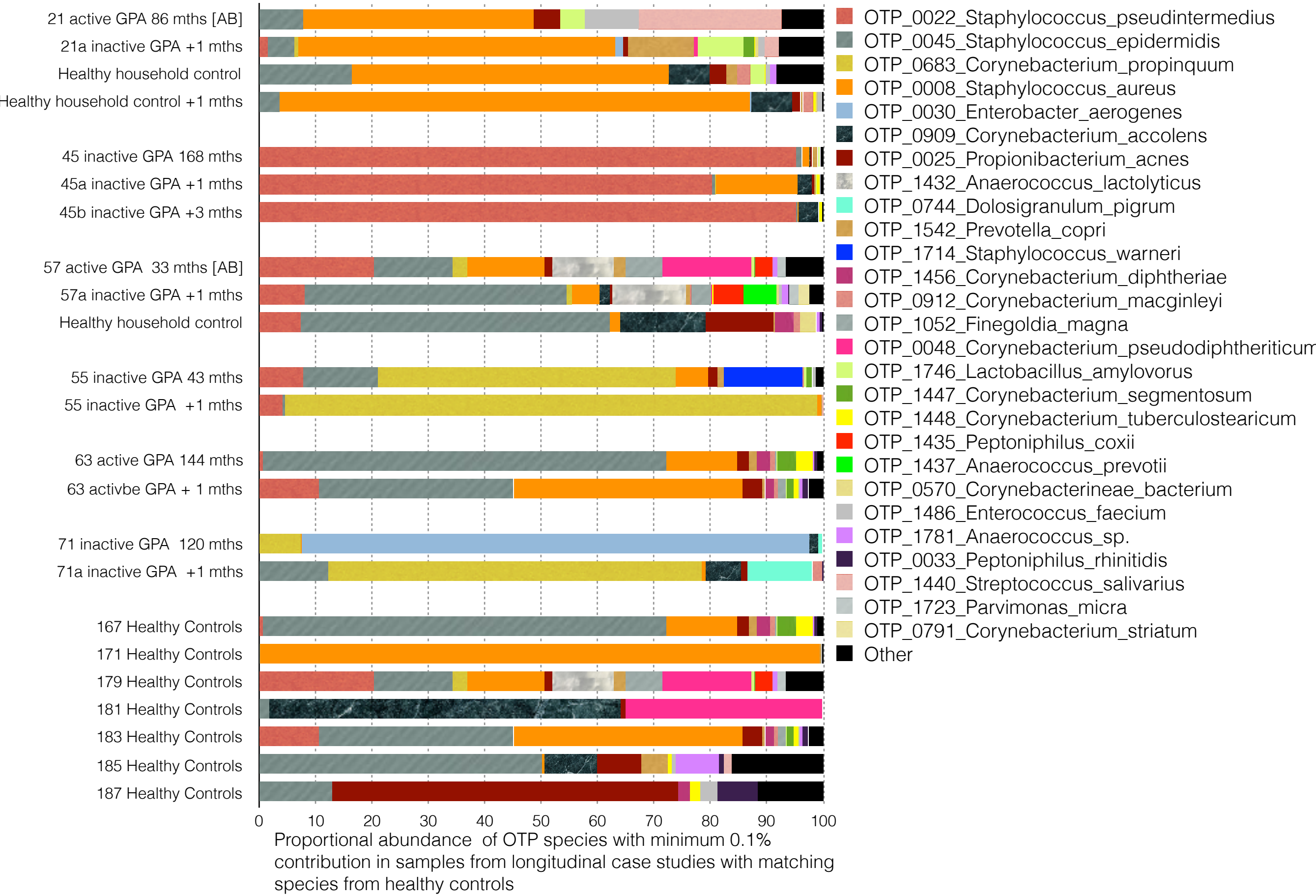


Supplementary Figure 3. Taxonomic annotation of longitudinal case studies using bacterial 16S marker gene sequenced species



Supplementary Figure 3. Taxonomic annotation of longitudinal case studies using bacterial 16S marker gene sequenced species

Bacterial diversity in six patients with follow up sampling one month ($n = 6$) and 3 months later ($n = 1$) is shown. In two case studies, household controls at initial sampling time point ($n = 2$) and one months later ($n = 1$) were also available. For comparisons, seven healthy controls are shown at the bottom of the figure. The abundance of the top 27 species with a minimum 0.1% contribution in samples from longitudinal case studies with matching species from healthy controls are shown on the x axis.