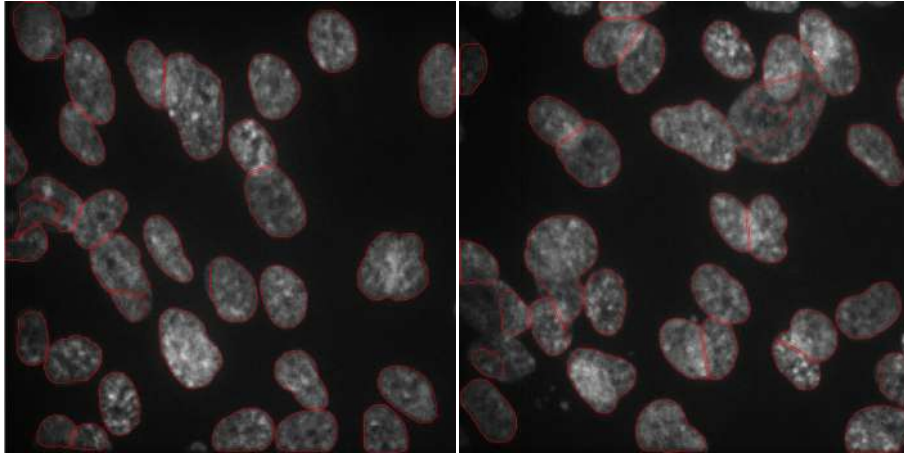


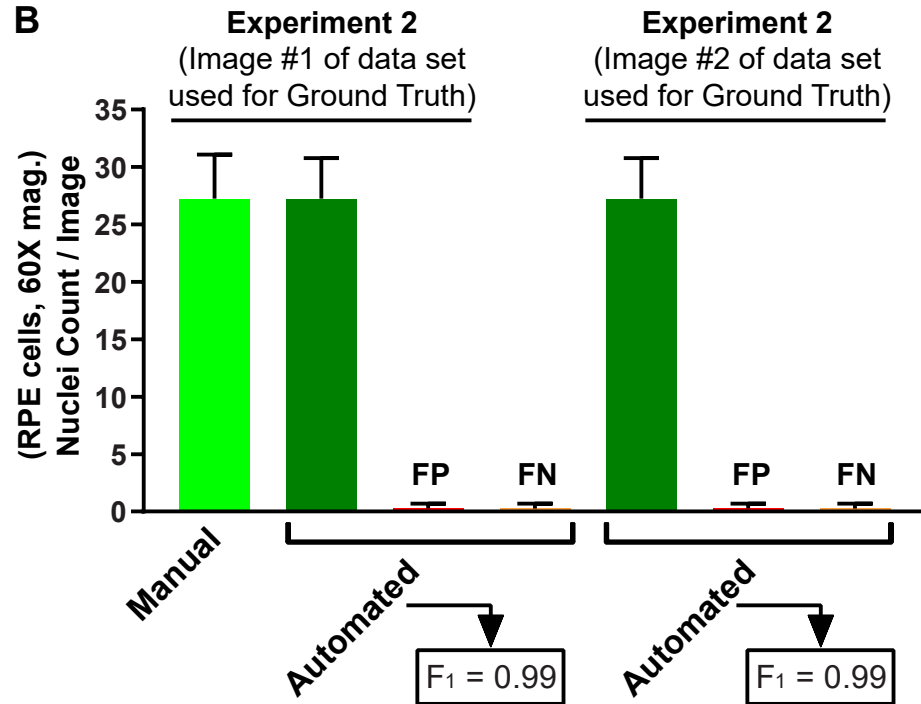
A

Example of Nuclei Detection
Experiment 2, Image #1

Example of Nuclei Detection
Experiment 2, Image #2



B



C

RPE cells (Nuclei Count)	Experiment 2 (Ground Truth #1)	Experiment 2 (Ground Truth #2)
Images Analyzed	8	8
Manual	27.3±3.8	27.3±3.8
Automated	27.3±3.5 (100%)	27.3±3.5 (100%)
FP	0.3±0.3 (0.9%)	0.3±0.4 (0.9%)
FN	0.3±0.4 (0.9%)	0.3±0.4 (0.9%)
Precision (α)	0.99	0.99
Recall (β)	0.99	0.99
F1 score	0.99	0.99
Accuracy	++++	++++

D

