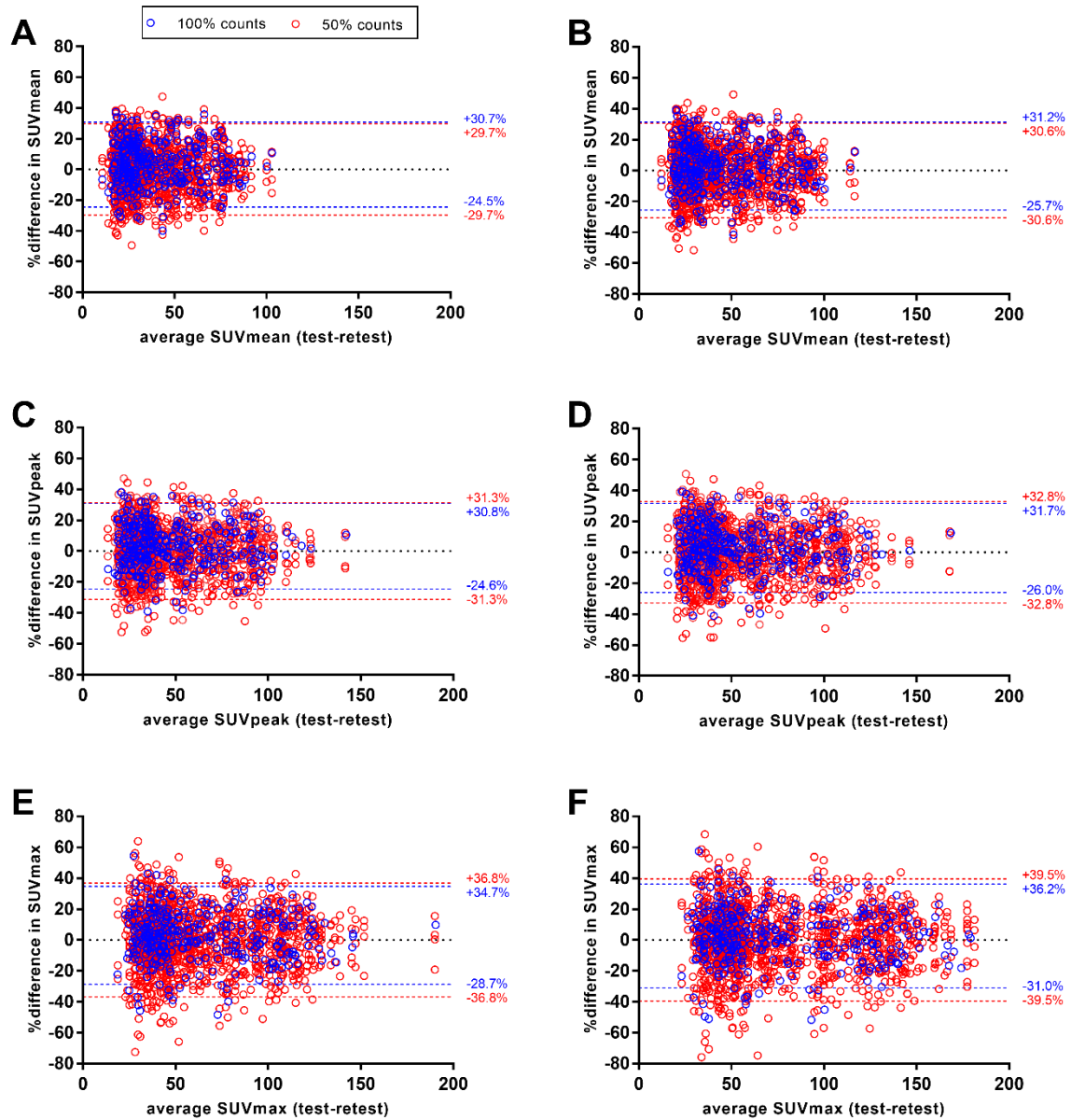


Supplemental Figure 1) Intrascan variability due to 50% count reduction as function of lesion ARTV for SUVmean (A and B), SUVpeak (C and D), and SUVmax (E and F). Results from both EARL1 images (A, C, E) and EARL2 images (B, D, F) are shown, with limits of agreement from Bland-Altman analyses.



Supplemental Figure 2) Bland-Altman graph of interscan (test-retest) variability of SUVmean (A and B), SUVpeak (C and D), and SUVmax (E and F) normalized to AUC-PP at 100% and 50% of counts. Results from both EARL1 images (left column) and EARL2 images (right column) are shown.