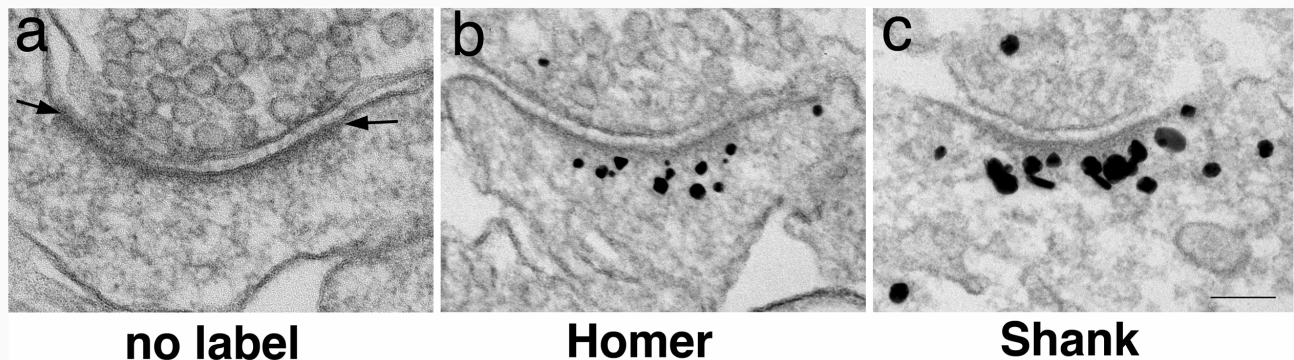


Additional File 5. Synaptic profiles from control samples under basal conditions.



(a) A typical synaptic profile without any immunolabeling. The PSD (area between two arrows) appeared as a thin layer (~ 30 nm) of electron dense material underneath the postsynaptic membrane. (b, c) Immunogold labeling of Homer (b) and Shank (c) are distinctly localized to the deeper layer of the PSD, beyond the PSD core. This layer is not readily detectable without immunolabeling. Scale bar = $0.1 \mu\text{m}$.