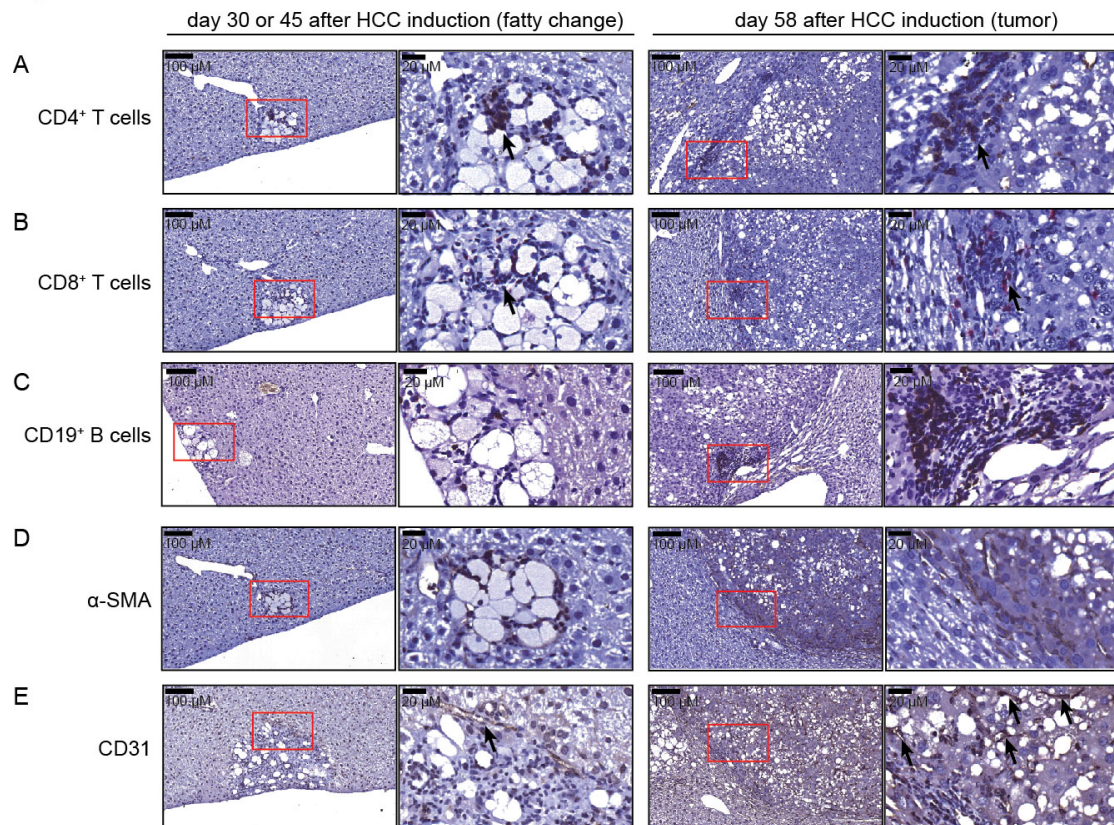


**Figure S1**



**Figure S1** Immunohistochemical analysis of indicated proteins in the liver or tumor tissues from mice receiving HDI of pKT2/CLP-AKT, pT/Caggs-NRASV12 and pCMV(CAT)T7-SB100. Tissues were collected at day 30 or 45 (fatty change) or day 58 (tumor) post HDI. (A) CD4 staining, (B) CD8 staining, (C) CD19 staining, (D) α-SMA staining, and (E) CD31 staining of the liver/tumor tissues were shown. Scale bars, 100 or 20 μm