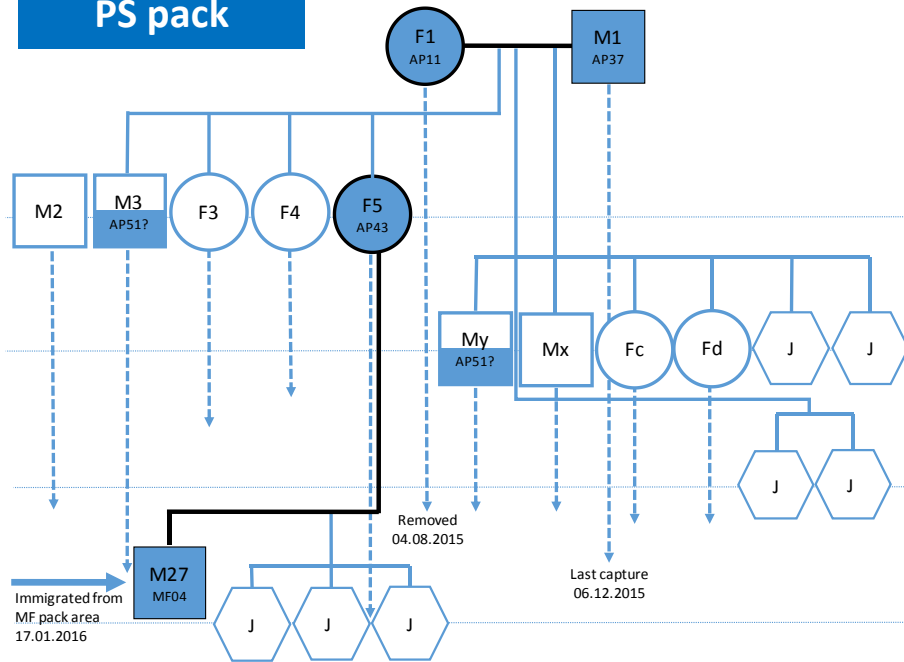


Estimation of pack density in grey wolf (*Canis lupus*) by applying spatially explicit capture-recapture models to camera trap data supported by genetic monitoring

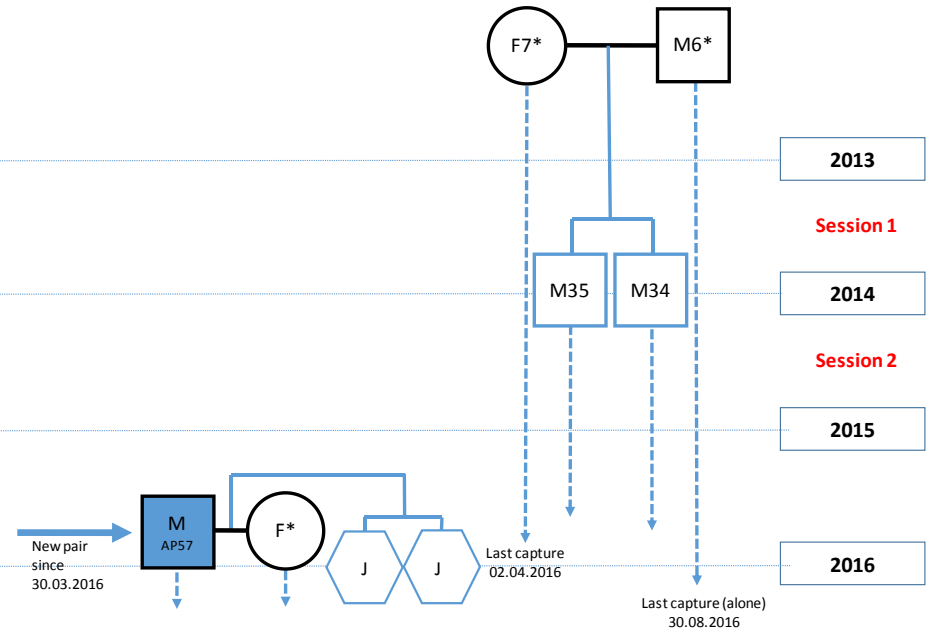
by Luca Mattioli, Antonio Canu, Daniela Passilongo, Massimo Scandura, Marco Apollonio

Additional file 3 - History and composition of the four packs with at least one individual genotyped (video-scats), as resulting from combination of CT and NGS data. The period 2014-2016 is considered in order to include the two CT sessions and genetic data confirming the reproduction or replacement of alpha individuals. Males are represented by squares, females by circles, and individuals of unknown sex by hexagons (J = pup). Alpha individuals have a black border and are connected to their mate by black lines. Full coloured polygons correspond to wolves whose identity was confirmed by videoscats (the lower alphanumeric code indicates the genotype). Alpha individuals that were genotyped by NGS but not videoscats are indicated by an asterisk. Vertical dashed lines indicate the observation period covered by CT. Years refer to the period comprised between 1st May (year X) and 30th April (year X+1).

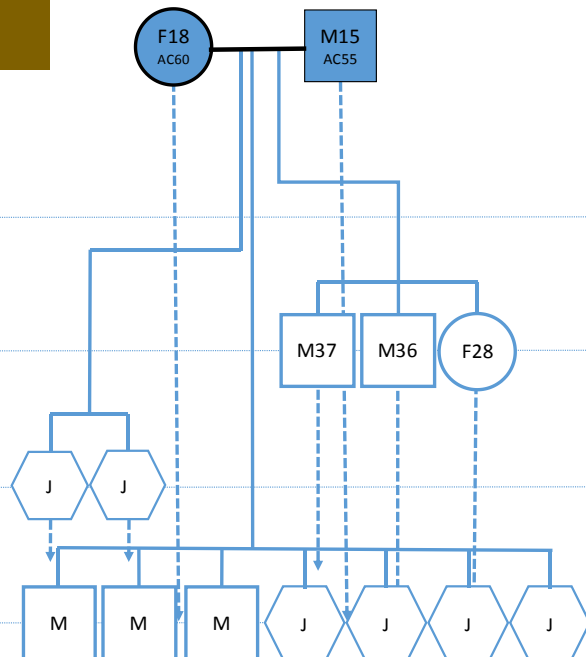
PS pack



PN pack



CN pack



MF pack

